

Driver Tool for USB Card Reader

USB Card Reader Installer User's Guide

< P/N 149433-02 Rev. C >

Copyright © 2005 Y-E Data, Inc. All Rights Reserved.

September 2005

Contents

1. Introduction	3
1.1. Supported OSes.....	3
1.2. Cautions	4
2. Macintosh	4
2.1. How to install	4
2.1.1. How to install (Mac OS X 10.4, 10.3, 10.2)	4
2.1.2. How to install (Mac OS X 10.1.2 or later)	6
2.1.3. How to install (Mac OS 9.0.4 or later)	7
2.2. How to uninstall the driver software	9
2.3. Icon and correspond memory card	10
3. Windows.....	11
3.1. Introduction.....	11
3.2. How to install	11
3.3. How to uninstall the driver software	14
3.4. Icon and corresponding memory card	15
3.5. How to change the drive letter (reference information)	16
3.5.1. Windows XP and 2000	16
3.5.2. Windows Me and 98SE	19

- It is prohibited by the copyright law to reproduce the whole or part of this software and User's Manual and rent the software, without permission of the copyright holder.
- We bear no liability for any pecuniary losses and lost profits resulting from use of the software included with this product, and any claims from third parties.
- This software cannot be used on other than specified equipment.
- The specifications of this software are subject to change without notice.
- We assume no responsibility for any breakdown and damage caused by misuse, troubles from other equipment, undue repairs or modifications.
- If this product should have any defect attributable to manufacture, we will exchange it with a new one, but cannot take on any more responsibility.

Illustrative pictures in this manual may differ from the computer's actual screens.

Apple, Mac and Macintosh are trademark of Apple Computer.

Microsoft Windows is a registered trademark of Microsoft Corporation.

CompactFlash is a trademark of SanDisk Corporation.

Microdrive is a trademark of International Business Machines Corporation.

MultiMediaCard is a trademark of Infineon Technologies AG and licensed MultiMediaCard Association.

SD card Logo is a registered trademark.

SONY, Memory Stick and Memory Stick PRO are trademark of SONY Corporation.

SmartMedia is a trademark of Toshiba Corporation.

Y-E Data is a registered trademark of Y-E Data, Inc.

xD-Picture Card is a registered trademark of FUJIFILM Corporation.

All other company names and product names in this manual are trademarks or registered trademarks of their respective companies.

1. Introduction

USB Card Reader Installer is a tool to install driver software for the USB Memory Card Reader (hereafter called **Card Reader**). You can easily install the driver for the Card Reader without complicated settings or configurations.

1.1. Supported OSes

PC	OS	Driver Software
Macintosh	Mac OS X 10.4, 10.3, 10.2	This product works with the standard driver in Mac OS X. To use this product with the special drive icons, install the driver from the CD-ROM.
	Mac OS X 10.1.2 or later (10.1.0 and 10.1.1 not supported)	This product works with the standard driver in Mac OS X.
	Mac OS 9.0.4 or later (9.0.2 and 9.0.3 not supported)	Install the driver from the CD-ROM.
Windows	Windows XP	This product works with the standard driver in Windows. To use this product with the special drive icons, install the driver from the CD-ROM (Service Pack 1 or later).
	Windows XP Professional x64 Edition	This product works with the standard driver in Windows. To use this product with the special drive labels, install the driver from the CD-ROM.
	Windows 2000	On Windows 2000 Service Pack 3 or later, this product works with the standard driver in Windows. To use this product with the special drive icons, install the driver from the CD-ROM.
	Windows Millennium Edition (Me)	This product works with the standard driver in Windows. To use this product with the special drive icons, install the driver from the CD-ROM.
	Windows 98 Second Edition (SE)	Install the driver from the CD-ROM.

NOTE:

- 1) According to the information from Apple Computer, Mac OS 9.0.2 and 9.0.3 do not start up if USB devices are connected before starting up the OS. Upgrade to Mac OS 9.0.4 or later. For more information, see Article Number 25139 of Tech Info Library of Apple Computer.
<http://docs.info.apple.com/article.html?artnum=25139>
(The free registration is required to access this document.)
- 2) Mac OS 8 is not supported.
- 3) Windows 95 is not supported.
- 4) The Card Reader doesn't operate properly on Mac OS X Ver.10.0 – Ver.10.1.1. Mac OS X Ver.10.1.2 or later is required.
- 5) The operation cannot be guaranteed on Macs with add-in USB port cards.
- 6) The operation cannot be guaranteed on PCs with the upgraded OS.
- 7) The installation of the driver software before Windows 2000 Service Pack 3 is possible. However, to use in the optimal environment, we recommend to install Windows 2000 SP 3 or later. After updating to Windows 2000 SP 3 or later, please install the driver software from the included CD-ROM again.

1.2. Cautions

Be careful of the following points before using USB Card Reader Installer. There is a possibility that you become unable to use the Card Reader.

- 1) Before starting the USB Card Reader Installer, quit other application programs that are running.
 - 2) Do not connect the Card Reader to a USB port while installing the driver software.
-

2. Macintosh

2.1. How to install

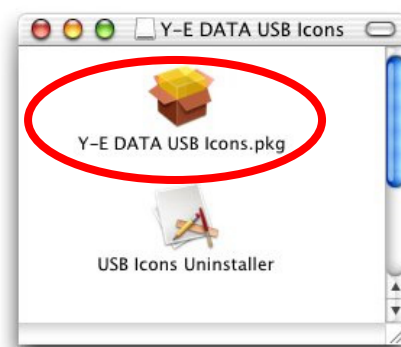
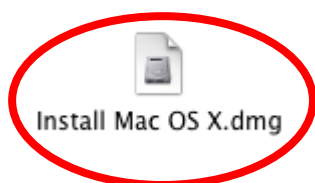
2.1.1. How to install (Mac OS X 10.4, 10.3, 10.2)

The Card Reader works with the standard driver in Mac OS X. You can use the Card Reader without additional driver installation. To use this product with the special drive icons, install the driver from the CD-ROM.

- 1) Insert the USB Card Reader Installer Driver CD-ROM into your Macintosh. Close all application programs before the installation, because you must restart your computer after the installation.
- 2) Double-click the CD-ROM icon to open it.

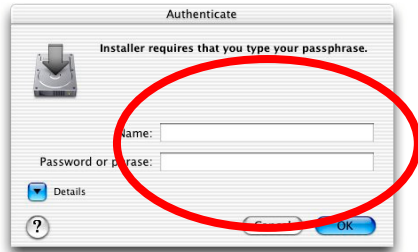


- 3) Double-click the "Install Mac OS X.dmg" icon. Then double-click the "Y-E DATA USB Icons.pkg" icon to start the installation.

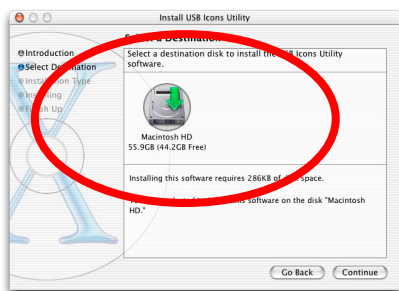


- 4) Follow the onscreen instructions to install the driver. During the installation, Authenticate and Select Destination screens are displayed.

When the Authenticate screen is displayed, type your password. Then click **OK** to continue the installation.



When the Select Destination screen is displayed, select the destination. Then click **Continue** to continue the installation.



- 5) After the completion, click **Restart** to restart your computer.



- 6) After restart, connect the Card Reader to a USB port of your Macintosh with the included USB cable.
- 7) When you insert a memory card into the Card Reader, the corresponding drive icon appears in the Finder, which indicates that you can access it. Double-click the icon to display files on the memory card.
(Refer to “2.3. Icon and correspond Memory Card list”)

2.1.2. How to install (Mac OS X 10.1.2 or later)

The driver installation is not required. The Card Reader works with the standard driver in Mac OS X.

- 1) With the power of your Mac on, connect the Card Reader using the included USB cable to a USB port on your Mac.
- 2) Insert a memory card into the Card Reader. After a few seconds a new "removable media" icon appears in the Finder.

Double click the removable media icon to access the files on the cards.



NOTE: On Mac OS X 10.1, all icons are displayed as "removable media" icons.

The Card Reader doesn't operate properly on Mac OS X Ver.10.0 - Ver.10.1.1. Please update your Mac to Ver.10.1.2 or later. You can check your OS version by clicking the Apple logo on the upper left corner of your screen and select "About This Mac".

Inserting memory cards which contain photographs from digital cameras may cause image capture software to start automatically. For information about how to use image capture, see your Macintosh manual.



2.1.3. How to install (Mac OS 9.0.4 or later)

Install the driver before connecting the Card Reader to your Mac.

- 1) Insert the USB Card Reader Installer Driver CD-ROM into your Macintosh. Close all application programs before the installation, because you must restart your computer after the installation.
- 2) The CD-ROM window should open automatically. If it does not open, double-click the CD-ROM icon to open it.
- 3) Double-click the "Install Mac OS 9" Installer icon to start the installation.



- 4) The version information, license agreement, and other data are displayed. Read them, then click the **Continue** button.



- 5) Confirm the install location and change it as necessary. Then click the **Install** button.



- 6) A warning message, saying that you must restart your computer after the installation, appears. Click the **Continue** button.



- 7) After the completion, click **Restart** to restart your computer.



- 8) After restart, connect the Card Reader to a USB port of your Macintosh with the included USB cable.
 - 9) When you insert a memory card into the Card Reader, the corresponding drive icon appears in your Finder, which indicates that you can access it. Double-click the icon to display files on the memory card.
- (Refer to “2.3. Icon and correspond Memory Card”)

2.2. How to uninstall the driver software

Mac OS X 10.4, 10.3, 10.2:

To uninstall the driver software, run the uninstall program.

- 1) Close all open applications before starting the uninstall. Because the Macintosh reboots automatically when the uninstall completes.

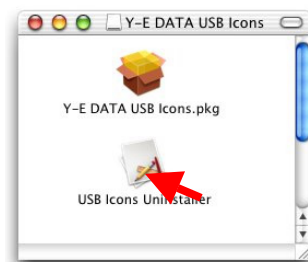
- 2) Double-click the CD-ROM icon to open it.



- 3) Double-click the “Install Mac OS X.dmg” icon.



- 4) Double-click the "USB Icons Uninstaller" icon. Then follow the onscreen instructions.








Mac OS 9

To uninstall the driver software, turn off two files, "Y-E Data USB Driver" and "Y-E Data Storage shim" using the Extension Manager of the control panel.


2.3. Icon and correspond memory card

Corresponding memory card and icon differs for every card reader. Refer to the manual of each Card Reader.






Mac OS X 10.4, 10.3, 10.2

Icon	Corresponding Memory Card
	CompactFlash Microdrive
	SmartMedia xD-Picture Card
	Memory Stick Memory Stick PRO
	SD media Card MultiMediaCard
	SmartMedia (Card Reader with no xD-Picture Card slot)

Mac OS X 10.1.2 or later

Icon	Corresponding Memory Card
	CompactFlash, Microdrive SmartMedia xD-Picture Card Memory Stick, Memory Stick PRO SD media Card, MultiMediaCard

Mac OS 9.0.4 or later

Icon	Corresponding Memory Card
	CompactFlash Microdrive
	SmartMedia xD-Picture Card
	Memory Stick Memory Stick PRO
	SD media Card MultiMediaCard
	SmartMedia (Card Reader with no xD-Picture Card slot)

3. Windows

3.1. Introduction

To those who use Windows XP, 2000 SP3 or later, and Me

The Card Reader works with the standard driver in Windows. You can use the Card Reader without additional driver installation. To use this product with the special drive icons and labels, install the driver from the CD-ROM.

Note: On Windows XP without Service Pack and Windows XP Professional x64 Edition, only the special drive labels are available.

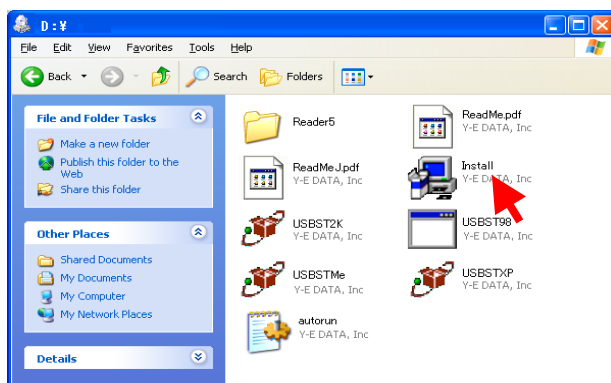
To those who use Windows 2000 SP2 or before, and 98SE

On Windows 2000 SP2 or before, and Windows 98SE, you need to install the driver from the Driver CD-ROM. Before connecting the Card Reader to your PC, follow the steps below to install the driver.

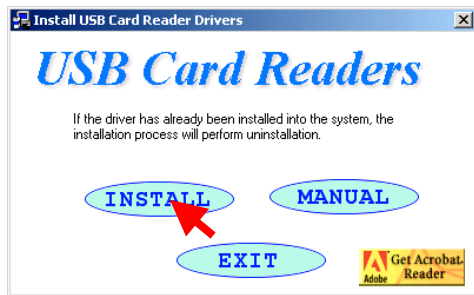
3.2. How to install

The installation procedure is almost same on all Windows. This manual uses the screens on Windows XP as an example.

- 1) Start up Windows XP and log in as an account with Administrator privileges.
- 2) Insert the Driver CD-ROM into the CD-ROM drive of your PC. The installer starts up automatically. If it does not start, double-click the CD-ROM icon in the My Computer folder to open it and double-click [Install.exe] on the CD-ROM to start the installer.



- 3) The installer displays the following screen. Click [Install] to install the driver files.

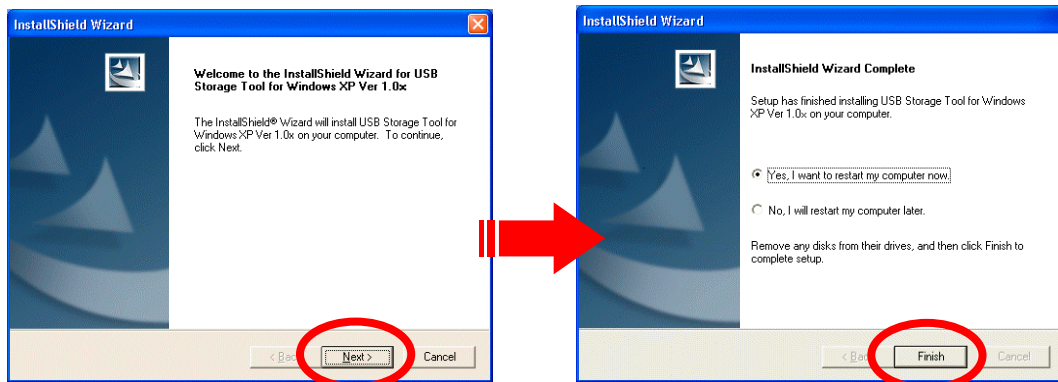


NOTE: If you run [Install] for the second time, the driver will be uninstalled.

- 4) The 'Choose Setup Language' screen appears. Click the **OK** button to proceed. The same driver is installed whichever language you choose.



- 5) Click the **NEXT>** button to proceed. The installer copies necessary files to the hard disk. Then click the **Finish** button to finish the installer. Windows automatically restarts after a few seconds.



- 6) After Windows reboots, please log in as an account with Administrator privileges again. Next, connect the Card Reader to the USB port with the included USB cable. Then Windows automatically recognizes the Card Reader and four new memory card drive icons are added to your "My Computer" folder. In the following example, the drive letters are set from F: to I:. The drive letters may vary depending on the configuration of your computer.

Example of My Computer



Refer to "3.5. How to change the drive letter (Reference information)", to change a drive letter.

- 7) If a memory card is inserted and the corresponding icon is double-clicked, a window opens and you can access the contents of the card.
(Refer to "3.4. Icon and correspond Memory Card".)

If a memory card is inserted that has a volume label, the volume label is displayed as the drive label. It is same as a CD-ROM drive.

For example, when a Compact Flash is inserted with the volume label "TestData", the icon and drive label is displayed as follows:

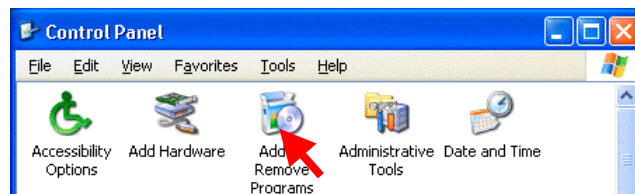


3.3. How to uninstall the driver software

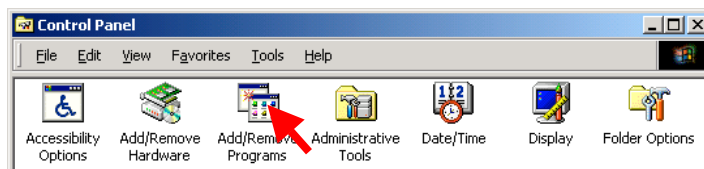
When updating the driver software, it is necessary to uninstall the existing driver software before installing new driver software.

- 1) Unplug the USB cable of the Card Reader from the PC.
- 2) Double-click the Add/Remove Programs icon in the Control Panel to open the appropriate window.

Windows XP

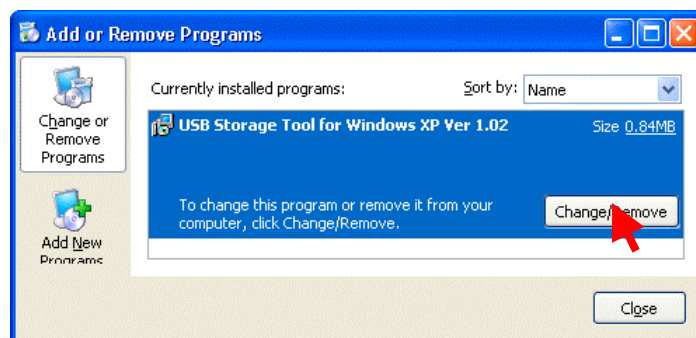


Windows 2000, Me, 98SE

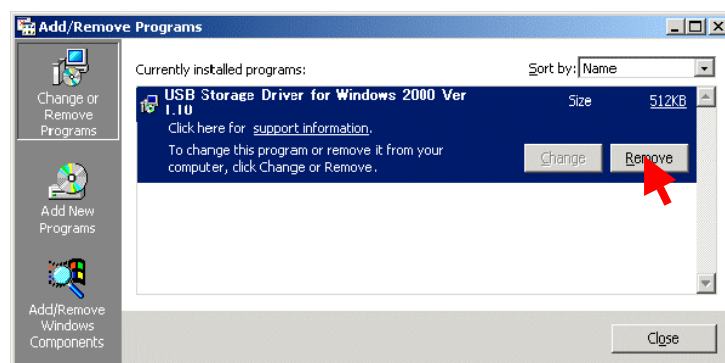


- 3) In the Add/Remove Programs window, the list of installed applications is displayed. In this list, find USB Storage Tool for Windows XP, and click the [Remove] button. The uninstaller starts up. Then follow the onscreen instructions to uninstall the driver software.

Windows XP













Windows 2000, Me, 98SE








3.4. Icon and corresponding memory card

Corresponding memory card and icon differs for every card reader. Refer to the manual of each Card Reader.

Windows XP

Icon		Corresponding Memory Card
SP1 or later	Without SP, x64 Edition	
	 Compact Flash Drive	CompactFlash Microdrive
	 xD/SM Drive	SmartMedia xD-Picture Card
	 Memory Stick Drive	Memory Stick Memory Stick PRO
	 SD Card Drive	SD media Card MultiMediaCard
	 Smart Media Drive	SmartMedia (Card Reader with no xD-Picture Card slot)

Windows 2000, Me, and 98SE

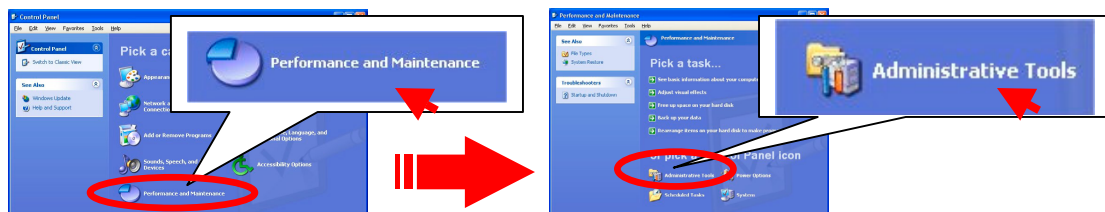
Icon	Corresponding Memory Card
	Compact Flash Microdrive
	SmartMedia xD-Picture Card
	Memory Stick Memory Stick PRO
	SD media Card MultiMediaCard
	SmartMedia (Card Reader with no xD-Picture Card slot)

3.5. How to change the drive letter (reference information)

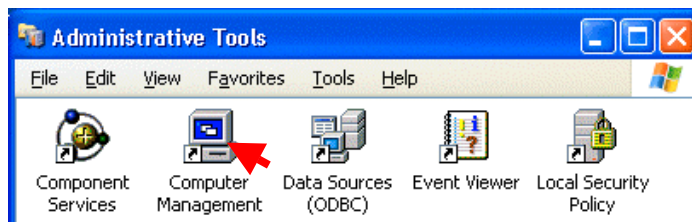
Installing the Card Reader may change the drive letters (E, F, etc.) of the CD-ROM drive and other drives. In this case, you can change the drive letters of the memory card reader/writers as described below.

3.5.1. Windows XP and 2000

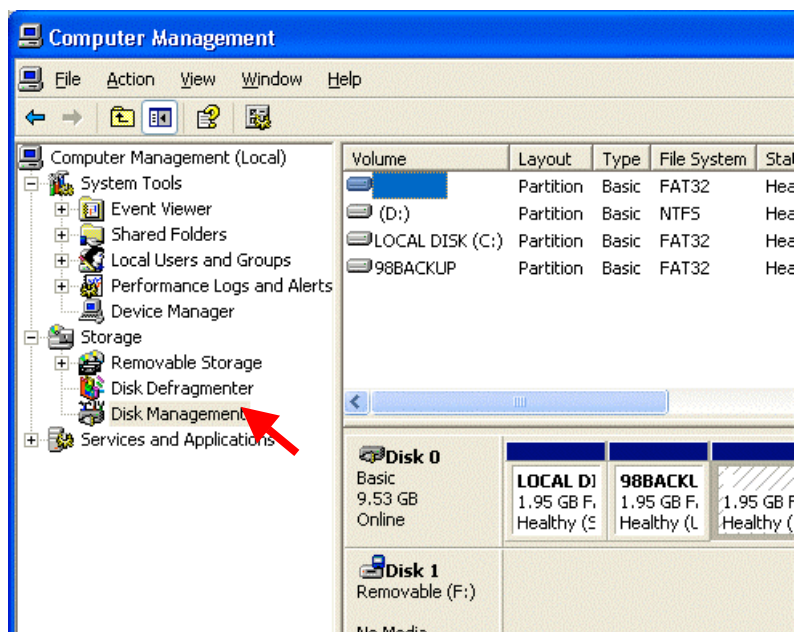
- 1) In the Control Panel, double-click the Administrative Tools icon to open it.



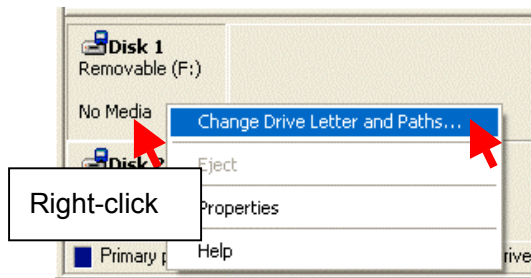
- 2) In Administrative Tools, double-click the Computer Management icon to open it.



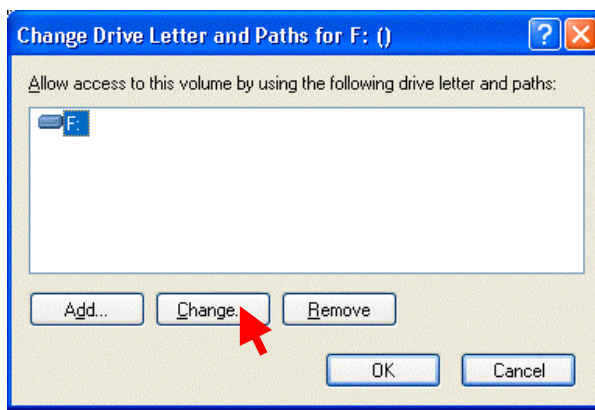
- 3) Click [Disk Management] in the Storage folder, then the disk information is shown at the right.



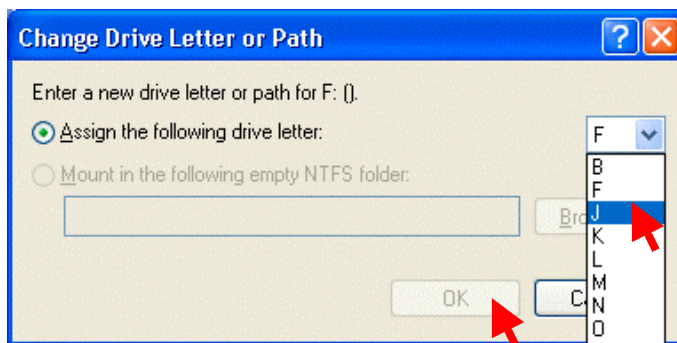
- 4) Right-click the disk with the drive letter you want to change, then select and click [Change Drive Letter and Path...].



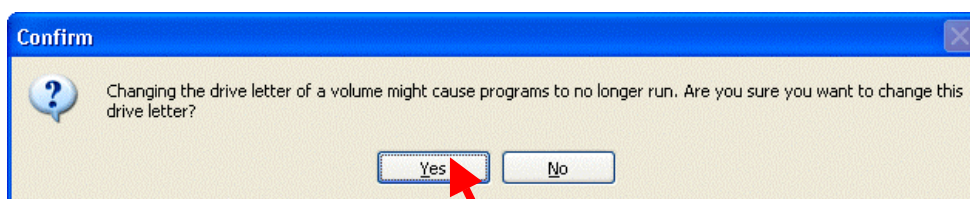
- 5) Click **Change...** to change the drive letter.



- 6) Set the drive letter and click the **OK** button. In this example, the drive letter of the Compact Flash Drive is set to J.



- 7) The following confirmation dialog box appears. Click the **Yes** button.



- 8) You can see the updated drive letter in My Computer. In the following example, the Compact Flash Drive is set to J: and xD/SM Drive is set to K:.

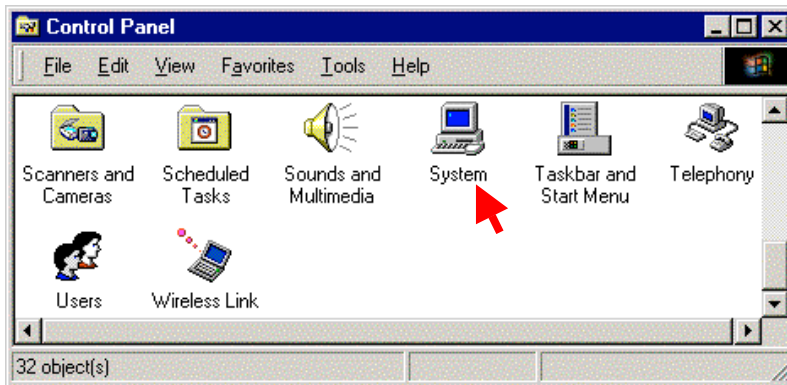


NOTE: After changing the drive letter, the drive icon may become the generic "removable drive" icon. In this case, disconnect the Card Reader once, then plug it in again.

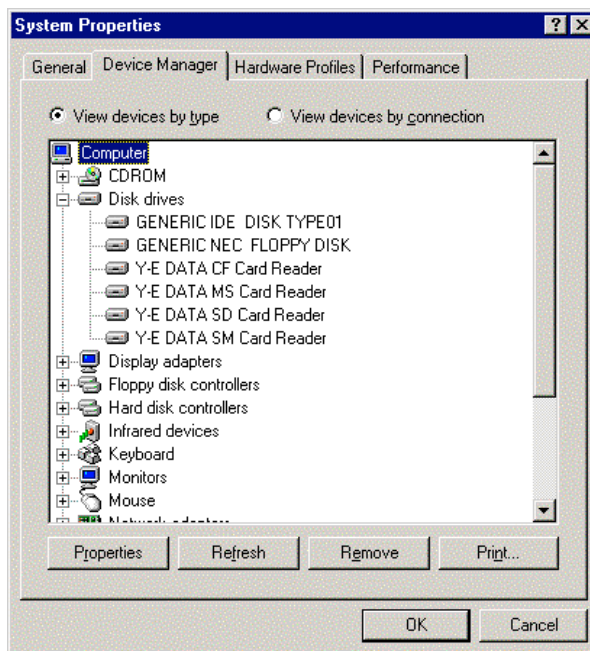
3.5.2. Windows Me and 98SE

- 1) Start up the Device Manager.

Double-click the System icon in the Control Panel to display the System Properties. Next, click the Device Manager tab in the System Properties to show the device list.



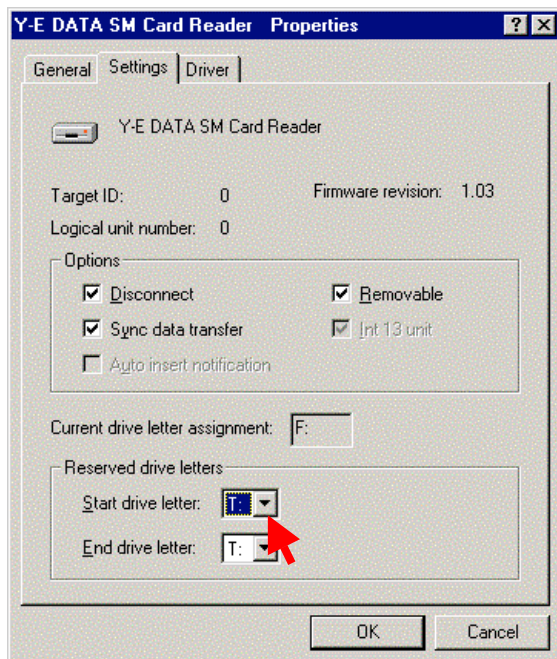
- 2) Double-click [Disk drives] in the device list to expand.



For example, Compact Flash Drive is displayed as "Y-E DATA CF Card Reader" and Smart Media Drive is displayed as "Y-E DATA SM Card Reader"

- 3) Double-click the target device to show its Properties.

Drive letters can be found in the Reserved drive letters on the Settings page. Set to the desired drive letter. In the following example, the drive letter for Smart Media Card Reader is set to T:.



- 4) After setting the drive letter, click the [OK] button to exit System Properties. Upon exit from System Properties, Windows makes a request for restart. Please follow the request and restart Windows. After that, the drive letter settings take effect.

In the following example, the Compact Flash Drive is set to S: and Smart Media Drive is set to T:

