

REEVEN

ADVANCED ALL-IN-ONE 240mm LIQUID CPU COOLER

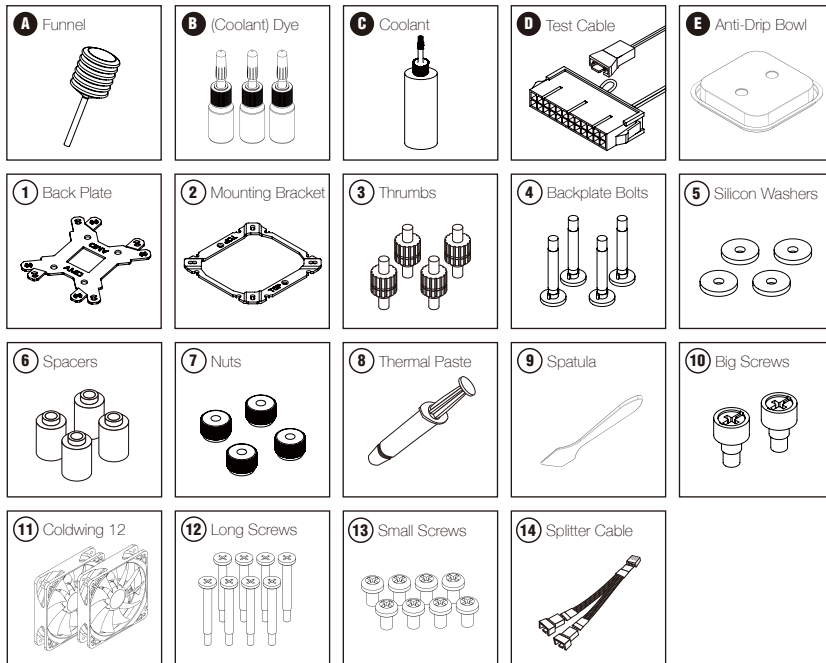
NAIA

INSTALLATION GUIDE



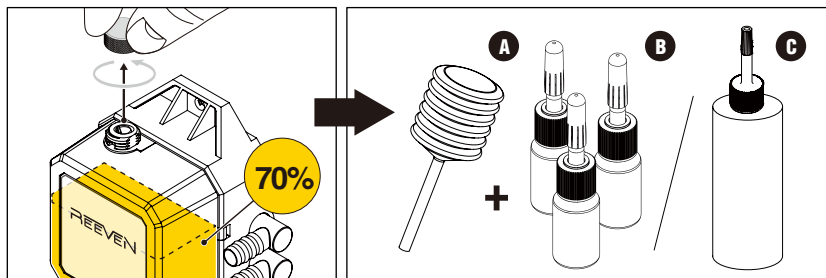
Please read the REEVEN product warranty policy before starting the installation.

PARTS LIST



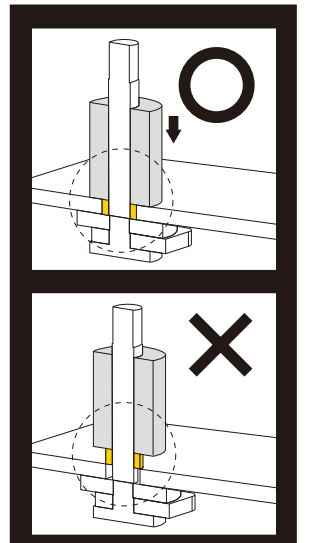
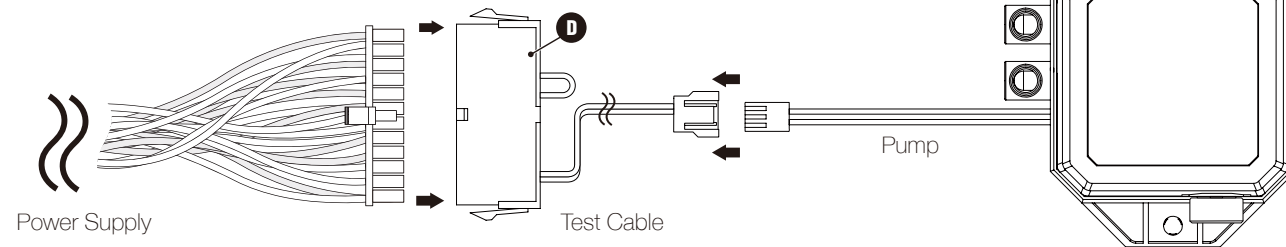
ADD COOLANT AND / OR DYE

- Only open the tank or add coolant when the product is not installed in the system.
- Only add coolant when the tank is ca. 70% full/coolant is on one level with the REEVEN logo.
- It is recommended to only use the bottle of coolant provided by REEVEN.
- The metal cap is only fully closed when it is on one level with the cooler wall.
- Any incidental or consequential damage caused by users refilling or replacing coolant is not within our warranty.
- The warranty REEVEN provides is limited only to our defective product.

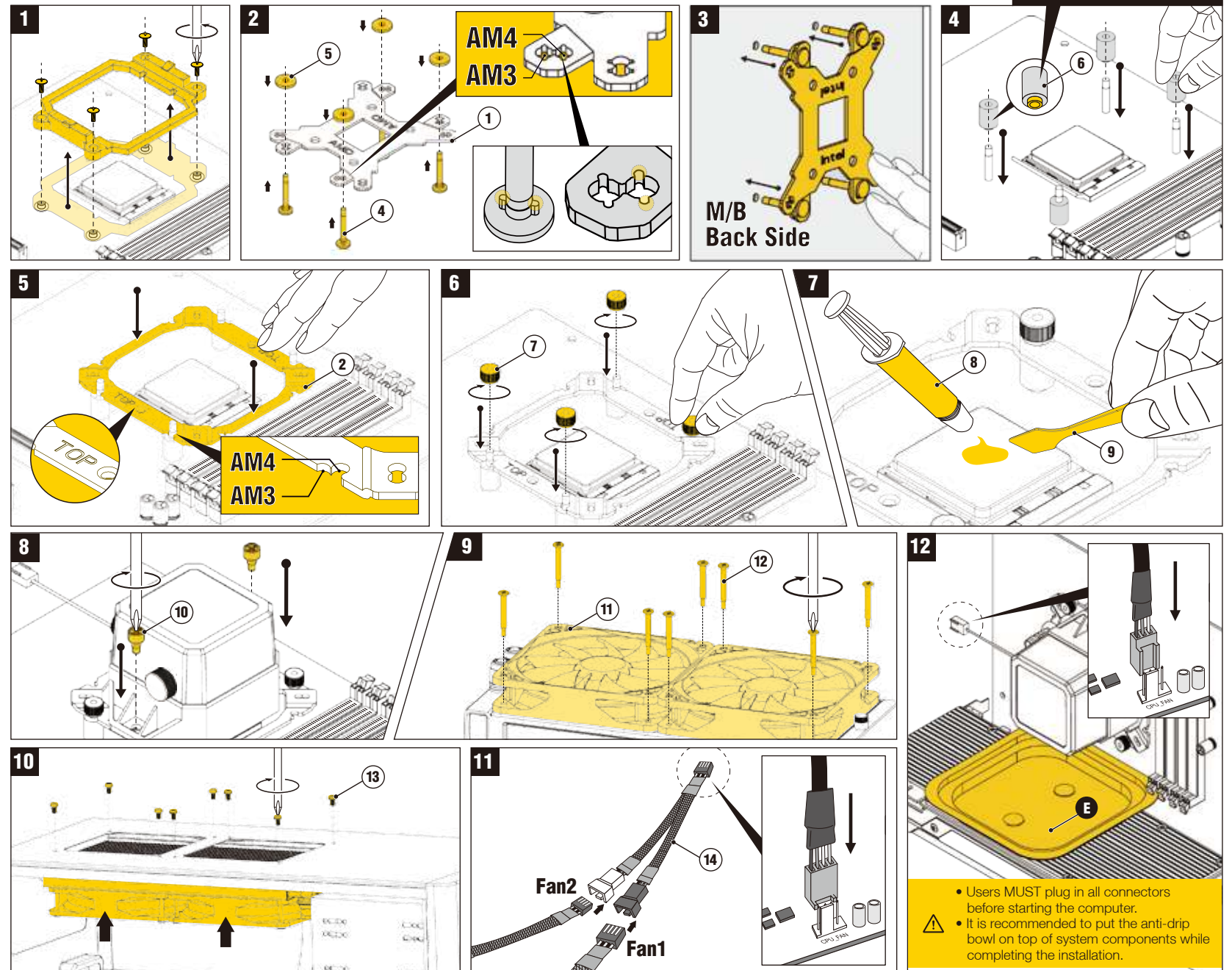


TESTING

- To ensure that pump, fans and lights are all functional, it is recommended to hold a 30 min test run outside of the system before installing the product.

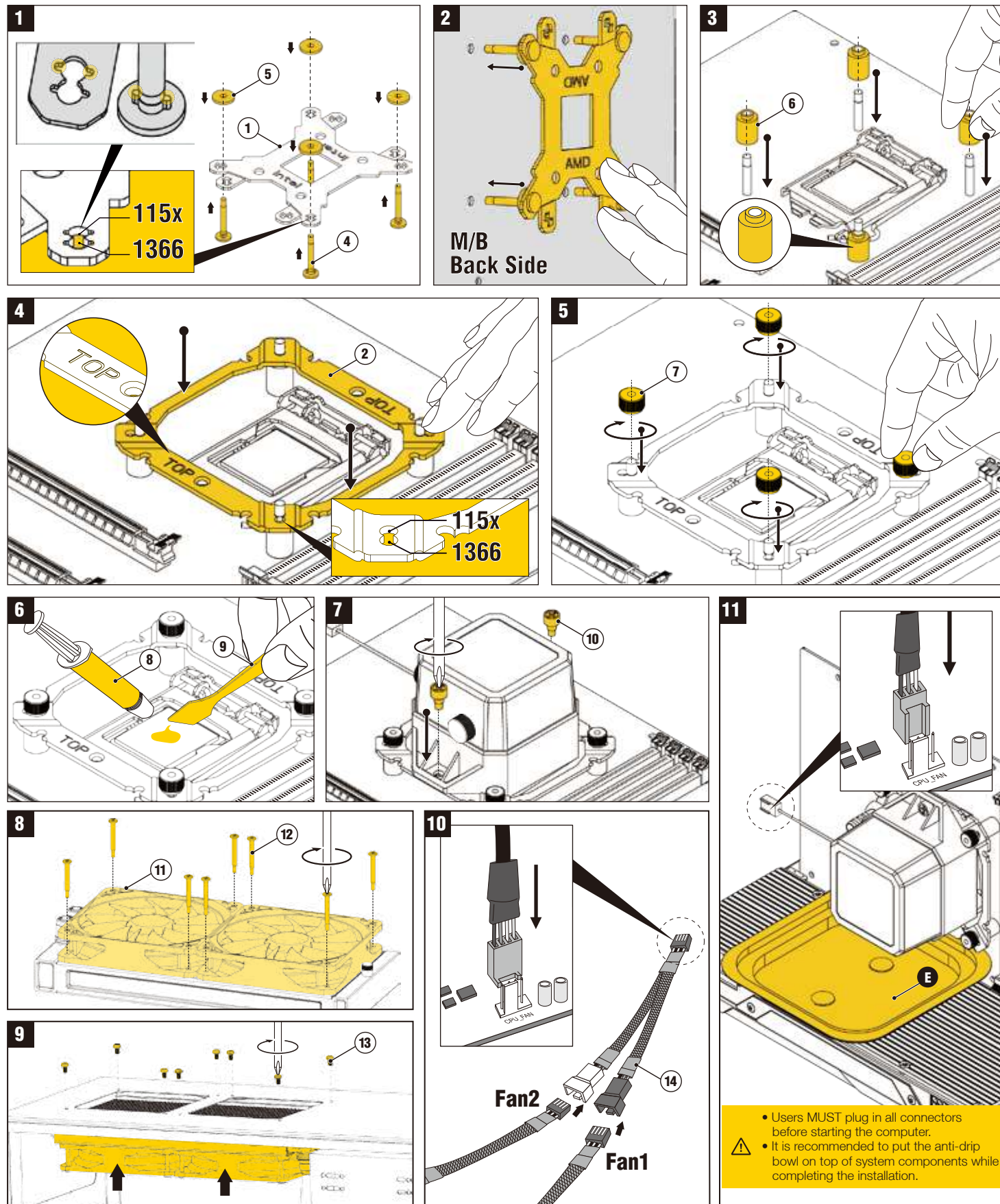


AMD SOCKET | AM4 / AM3(+) / AM2(+) / FM2(+) / FM1



- Users MUST plug in all connectors before starting the computer.
- It is recommended to put the anti-drip bowl on top of system components while completing the installation.

INTEL LGA 1366 / 115x



INTEL LGA 2011 / 2011-V3

